

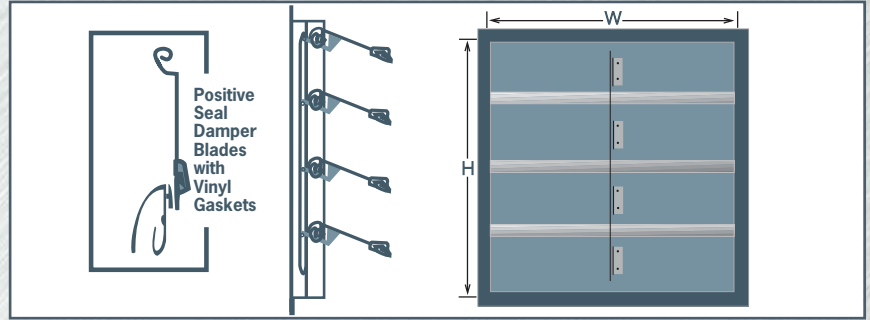


BACKDRAFT DAMPERS

BLADE OPTION:

SR: 0.016" - 0.020" roll formed aluminum with vinyl gasket - used with fan motors under 1 HP

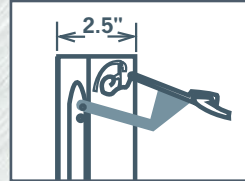
SE: 0.05" extruded aluminum with vinyl gasket - used with fan motors over 1 HP



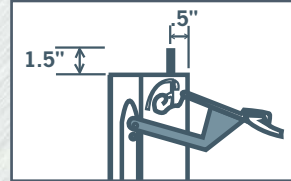
MODEL 3000, 3100, 3200

FEATURES

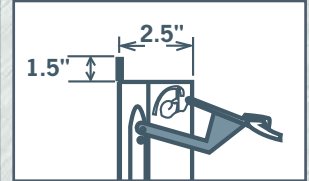
- Sturdily constructed from all aluminum extrusions.
- Roll form blades or extruded aluminum blades.
- Available in any combination of width and height.
- Less than 1% leakage.



SERIES 3000
SIDE MOUNT - NO FLANGE

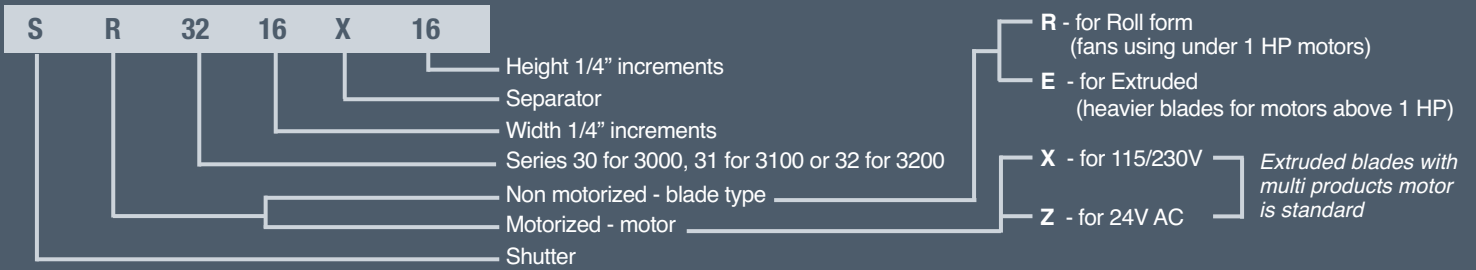


SERIES 3100
INWARD MOUNT

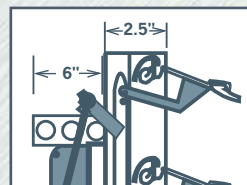
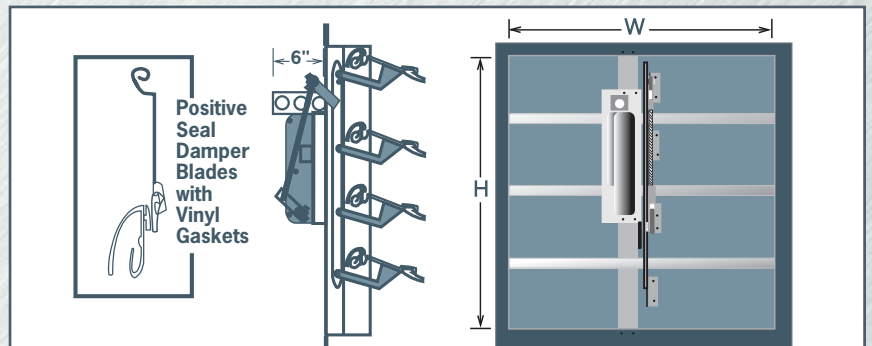


SERIES 3200
OUTWARD MOUNT

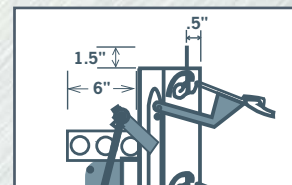
ORDERING METHOD FOR BACKDRAFT & MOTORIZED BACKDRAFT DAMPERS



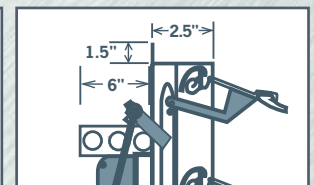
MOTORIZED BACKDRAFT DAMPERS



SERIES 3000M
SIDE MOUNT - NO FLANGE



SERIES 3100M
INWARD MOUNT



SERIES 3200M
OUTWARD MOUNT

MODEL 3000M, 3100M, 3200M

FEATURES

- Sturdily constructed from all aluminum extrusions
- Damper motor factory installed (24V, 115/230V - must specify at time of order)
- Maximum 8 sq. feet per motor
- Positive seal keeps leakage less than 1%
- Blades are 0.5" extruded aluminum with vinyl gasket
- Double panel available 30" and up
- Standard multi products motor

See page 57 for Multi-Products replacement motors.



- Bird screen
- Insect screen
- Special coatings
- End switch



Non-standard shutters are non-returnable and cannot be cancelled.