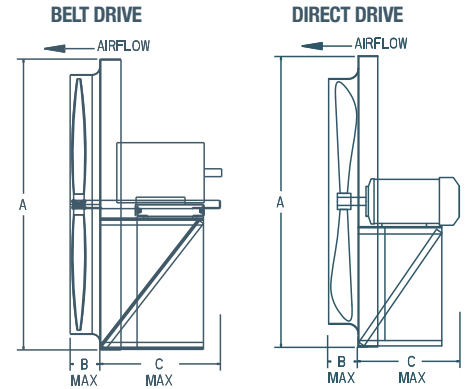


WALL EXHAUST FANS & VENTURI DIMENSIONS FOR STANDARD OPTIONS

VENTURI



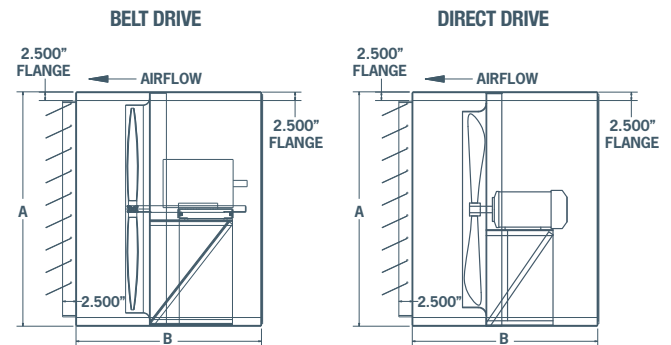
BLADE DIAMETER	A X A SQUARE	B	C				
			BELT DRIVE MOTOR FRAME		DIRECT DRIVE MOTOR FRAME		
			56 - 184	213 - 286	56 - 184	213 - 215	254 - 286
12"	16.125"	2.0"	--	--	13"	--	--
14"	18.125"	2.5"	--	--	13"	--	--
16"	20.125"	3.0"	--	--	13"	--	--
18"	22.125"	3.0"	--	--	13"	--	--
20"	24.125"	3.5"	--	--	13"	--	--
24"	29.625"	4.0"	18"	--	13"	14"	--
30"	35.625"	4.5"	18"	--	13"	14"	25"
36"	41.625"	5.0"	18"	28"	13"	14"	25"
42"	47.625"	5.0"	18"	28"	13"	14"	25"
48"	53.625"	5.0"	18"	28"	--	14"	25"
54"	59.657"	5.5"	18"	28"	--	--	--
60"	67.657"	6.0"	18"	28"	--	--	--



CABINET, BACK GUARD & SHUTTER (CBS)



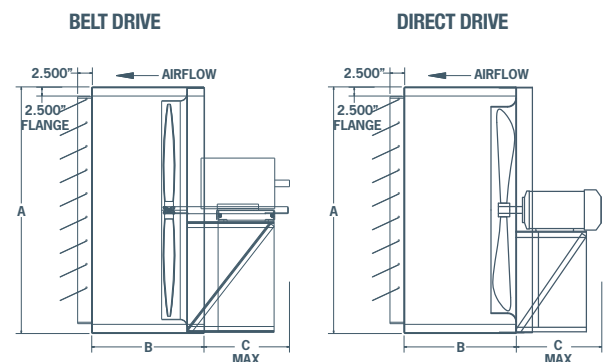
BLADE DIAMETER	A X A SQUARE	B	C				
			BELT DRIVE MOTOR FRAME		DIRECT DRIVE MOTOR FRAME		
			56 - 184	213 - 286	56 - 184	213 - 215	254 - 286
12"	16.375"	--	--	--	26"	--	--
14"	18.375"	--	--	--	26"	--	--
16"	20.375"	--	--	--	26"	--	--
18"	22.375"	--	--	--	26"	--	--
20"	24.375"	--	--	--	26"	--	--
24"	29.875"	33"	--	33"	33"	33"	43"
30"	35.875"	33"	--	33"	33"	33"	43"
36"	41.875"	33"	43"	33"	33"	33"	43"
42"	47.875"	33"	43"	33"	33"	33"	43"
48"	53.875"	33"	43"	--	33"	33"	43"
54"	59.9375"	33"	43"	--	--	--	--
60"	67.9375"	33"	43"	--	--	--	--



FRONT SLEEVE & SHUTTER (SLS)



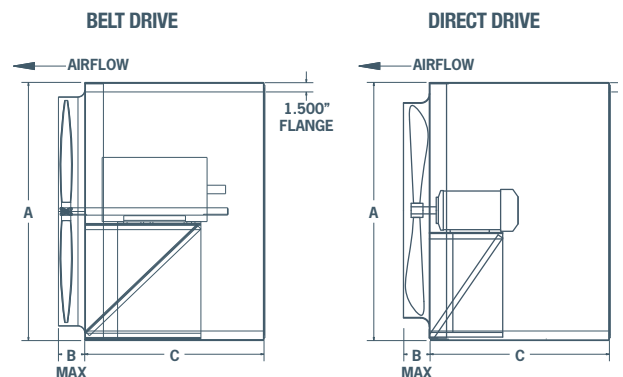
BLADE DIAMETER	A X A SQUARE	B	C				
			BELT DRIVE MOTOR FRAME		DIRECT DRIVE MOTOR FRAME		
			56 - 184	213 - 286	56 - 184	213 - 215	254 - 286
12"	16.375"	15.0"	--	--	12"	--	--
14"	18.375"	15.0"	--	--	12"	--	--
16"	20.375"	15.0"	--	--	12"	--	--
18"	22.375"	15.0"	--	--	12"	--	--
20"	24.375"	15.0"	--	--	12"	--	--
24"	29.875"	19.0"	15"	--	10"	11"	--
30"	35.875"	19.0"	15"	--	10"	11"	22"
36"	41.875"	19.0"	15"	25"	10"	11"	22"
42"	47.875"	19.0"	15"	25"	10"	11"	22"
48"	53.875"	19.0"	15"	25"	--	11"	22"
54"	59.9375"	19.0"	15"	25"	--	--	--
60"	67.9375"	19.0"	15"	25"	--	--	--



REAR SLEEVE & BACK GUARD (SLB)



BLADE DIAMETER	A X A SQUARE	B	C				
			BELT DRIVE MOTOR FRAME		DIRECT DRIVE MOTOR FRAME		
			56 - 184	213 - 286	56 - 184	213 - 215	254 - 286
12"	16.375"	2.0"	--	--	15"	--	--
14"	18.375"	2.5"	--	--	15"	--	--
16"	20.375"	3.0"	--	--	15"	--	--
18"	22.375"	3.0"	--	--	15"	--	--
20"	24.375"	3.5"	--	--	15"	--	--
24"	29.875"	4.0"	19"	--	19"	19"	--
30"	35.875"	4.5"	19"	--	19"	19"	29"
36"	41.875"	5.0"	19"	29"	19"	19"	29"
42"	47.875"	5.0"	19"	29"	19"	19"	29"
48"	53.875"	5.0"	19"	29"	--	19"	29"
54"	59.9375"	5.5"	19"	29"	--	--	--
60"	67.9375"	6.0"	19"	29"	--	--	--

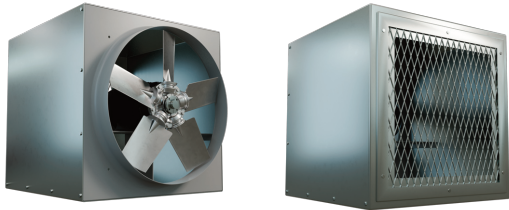


OPTIONS & ACCESSORIES

CABINET, BACK GUARD & SHUTTER (CBS)



REAR SLEEVE & BACK GUARD (SLB)



FRONT SLEEVE & SHUTTER (SLS)



MOTOR OPTIONS

TWO SPEED MOTOR

Two speed motors are available for some of Canarm/LFI's exhaust fans. 1800/1200 or 1800/900 RPM variable torque, single and three phase. Consult factory for available voltages and configurations.

EXPLOSION PROOF MOTORS

Some of Canarm/LFI exhaust fans can be equipped with Explosion Proof Motors for hazardous locations. Class I, Groups C & D - Class II, Groups F & G. Consult factory for models.

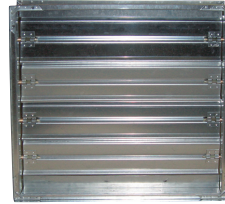
CLASS I, GROUP C Atmospheres containing ethyl ether, ethylene, gases or vapors of equivalent hazard.

CLASS I, GROUP D Atmospheres such as acetone, ammonia, benzene, butane, cyclopropane, ethanol, gasoline, hexane, methane, natural gas, naphtha, propane, or gasses or vapors of equivalent hazard.

CLASS II GROUP F Atmospheres containing carbonaceous dust, including carbon black, charcoal, coal, or coke dusts that have more than 8% total entrapped volatiles, or dusts that have been sensitized by other materials so that they present an explosion hazard.

CLASS II GROUP G Atmospheres containing combustible dusts not included in group E or F, including flour, grain, wood, plastic and chemicals.

STEEL CONTROL & MOTORIZED CONTROL DAMPERS



Motorized steel control dampers can be mounted in fan cabinet or sleeve in either exhaust or intake applications. Consult factory.

GUARDS



FRONT GUARD

Front guards available. Consult factory. Wire mesh not available on all sizes.

SPECIAL COATING

For most applications, Canarm LFI's standard enamel paint will provide the necessary surface protection for painted parts. For special requirements, coatings such as hot dipped galvanizing and epoxy, please consult factory.

DISCONNECT SWITCHES

Wire disconnect switches are available. See Controls & Thermostats section for details.